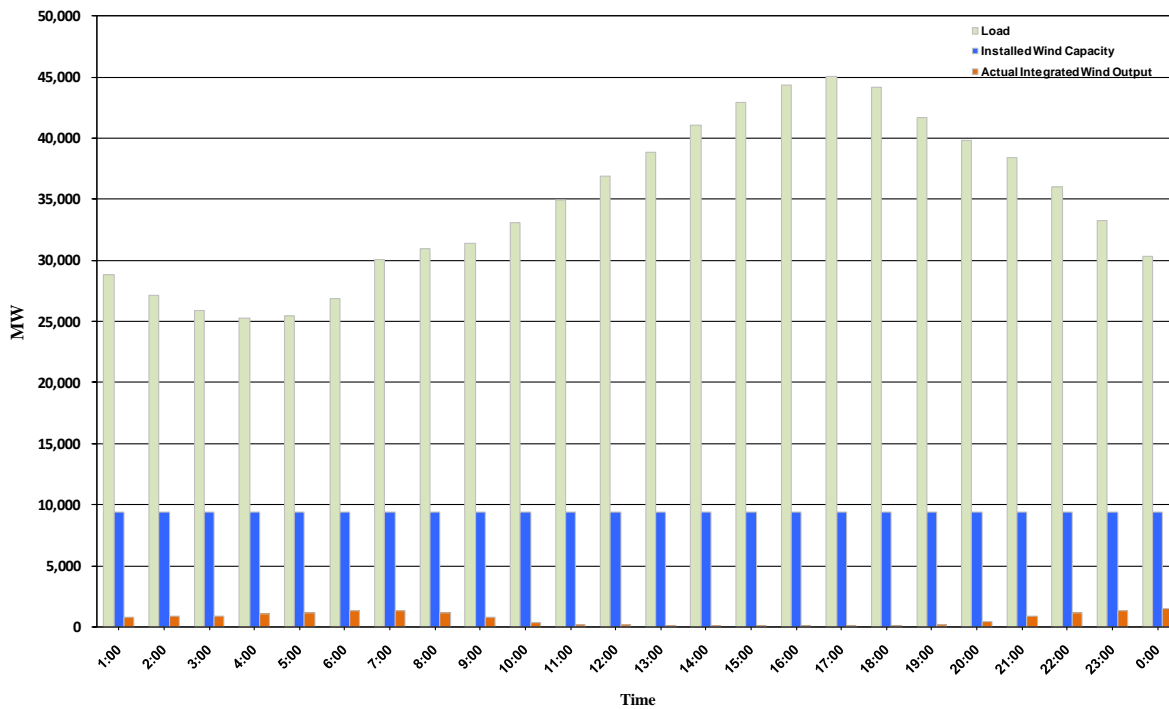




## ERCOT Grid Operations Wind Integration Report: 10/01/10

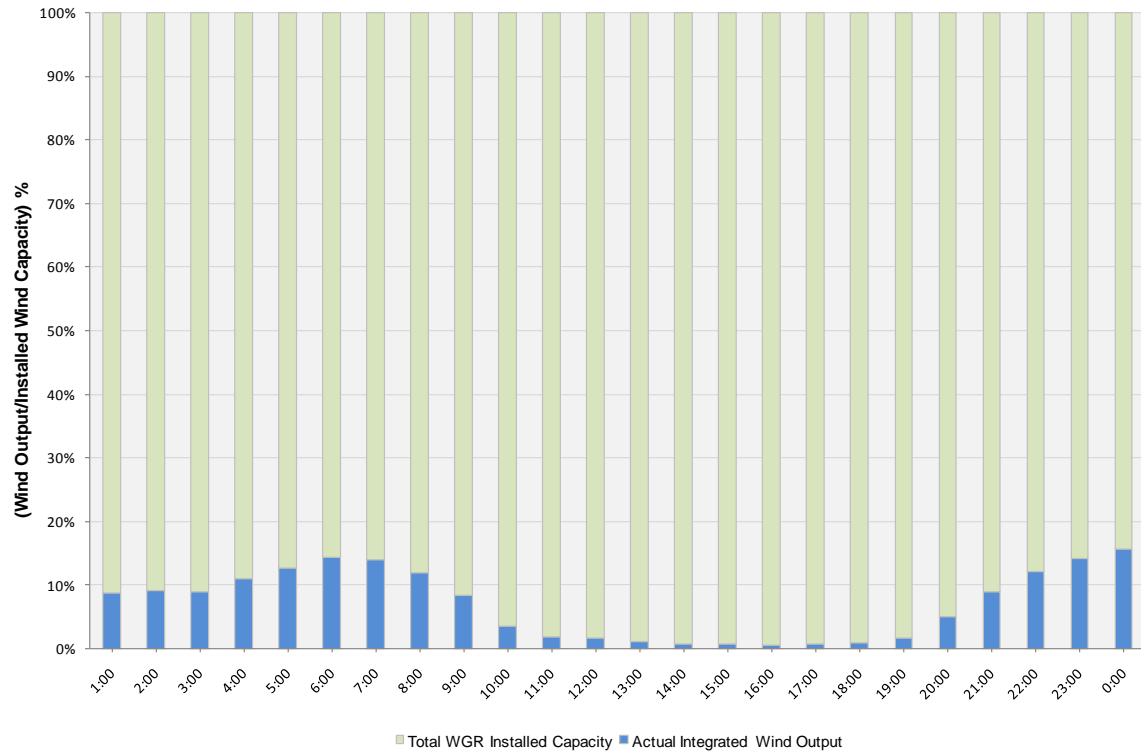
Peak Load	<b>45,018 MW</b>
Load Peak Hour	<b>17</b>
Wind Record 06/12/10	<b>7016 MW</b>
Max Wind value	<b>1649 MW</b>
Wind Peak Hour	<b>23:54:52</b>
Wind Penetration %	<b>5.64</b>

Hourly Average Actual Load vs. Actual Wind Output  
10-01-2010

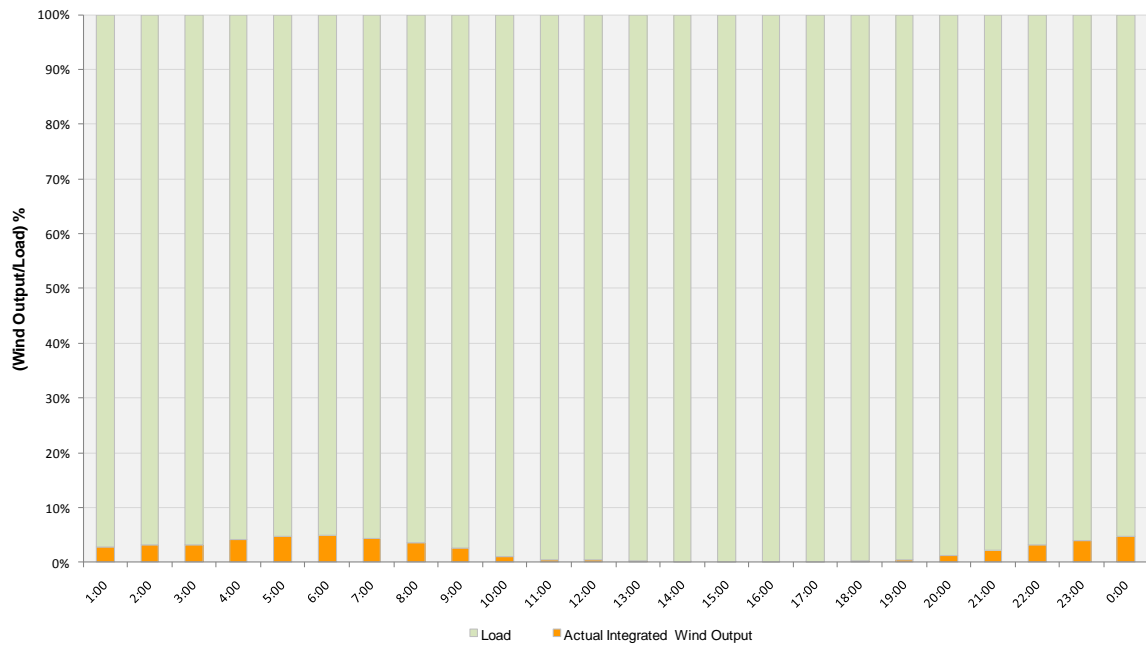




**Actual Wind Output as a Percentage of the Total Installed Wind Capacity**  
**10-01-2010**



**Actual Wind Output as a Percentage of the ERCOT Load**  
**10-01-2010**





## ERCOT Load vs. Actual Wind Output 09/24/10 - 10/01/10

